

# Poinsettia Village



7020-7220 Avenida Encinas,  
Carlsbad, CA 92011



161,062 SF



Phil Lyons  
p: 619-708-4210  
e: phil.lyons@cushwake.com



Property Summary GLA: 161,062

## Highlights

Poinsettia Village is located at the southwest corner of Interstate 5 and Poinsettia Lane in Carlsbad, CA. With a strong day and night population, the freeway-visible shopping center offers retailers an excellent opportunity in the highly sought-after community of Carlsbad. The center features national retailers such as Starbucks, Chase Bank, Jack in the Box, Jersey Mike's, and more.



Trade Area

	1 Mile	3 Miles	5 Miles
Population	11,140	40,726	144,941
No. of Households	4,566	16,436	57,175
Avg. HH Income	\$175,960	\$191,171	\$180,294

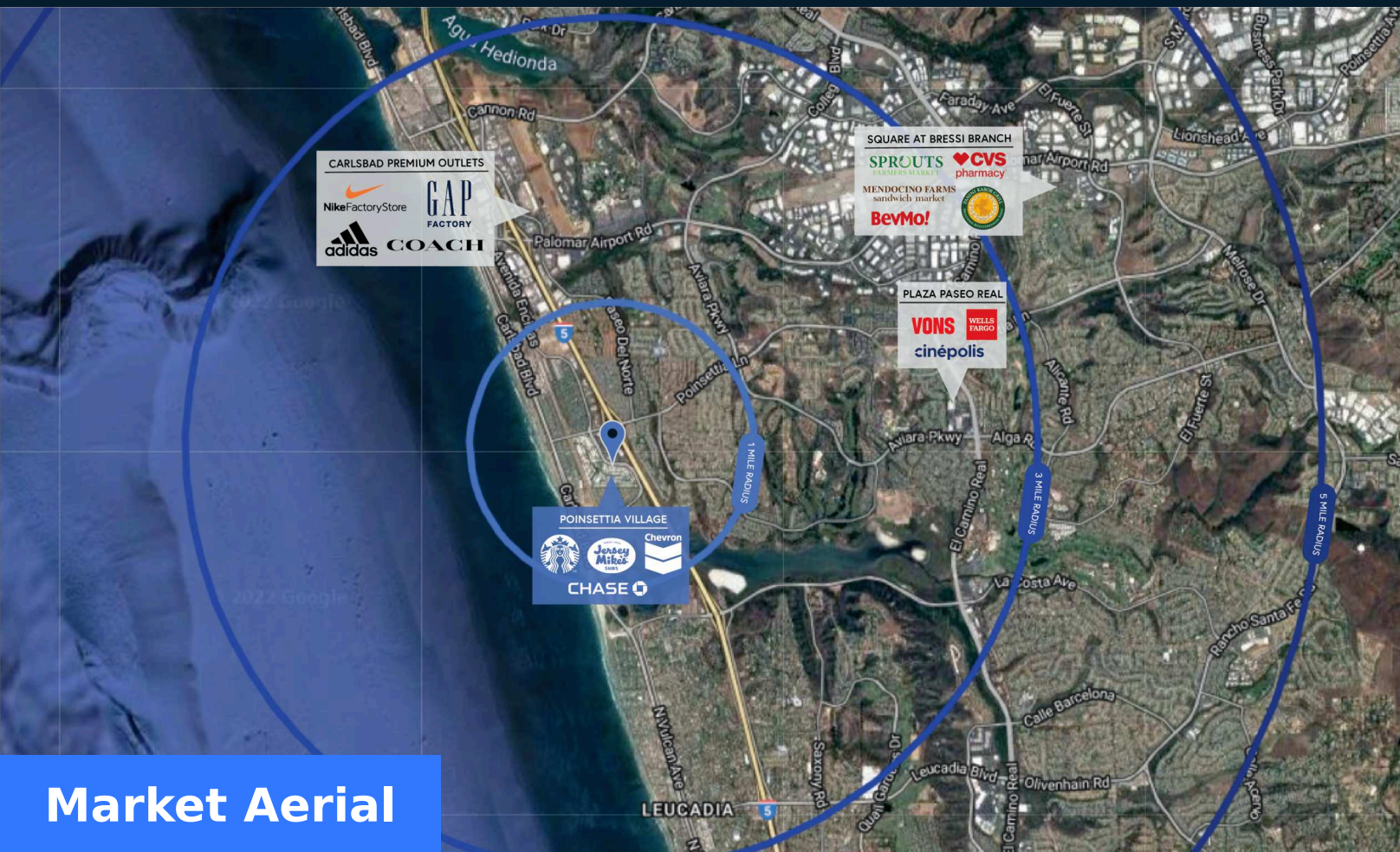
Where It Really Matters.



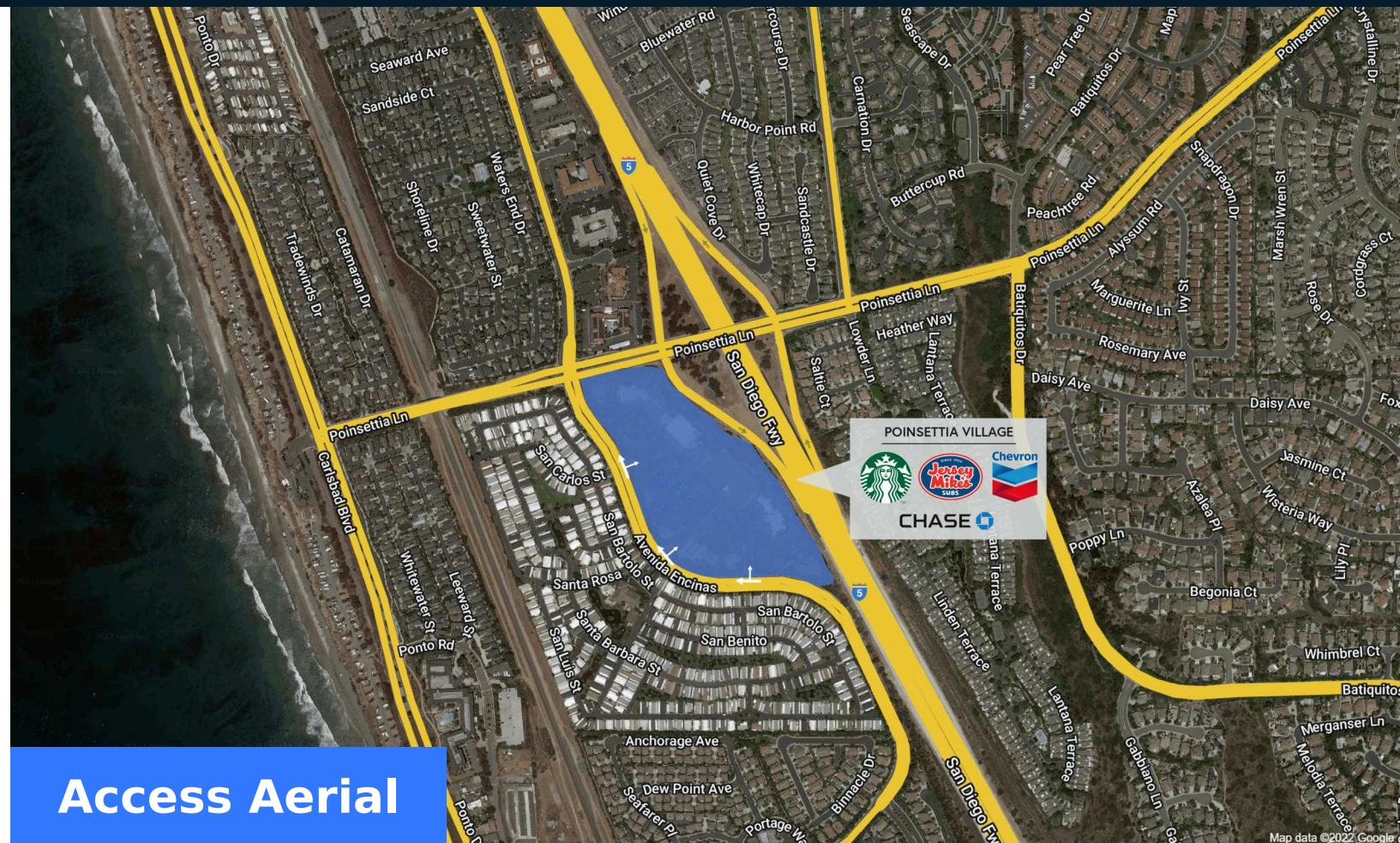
# Poinsettia Village

7020-7220 Avenida Encinas, Carlsbad, CA 92011

Phil Lyons  
p: 619-708-4210  
e: phil.lyons@cushwake.com



Market Aerial



Access Aerial



Where It Really Matters.



# Poinsettia Village



Phil Lyons  
 p: 619-708-4210  
 e: phil.lyons@cushwake.com



■ AVAILABLE SPACE

Retailers	SF
A100 Spectrum	4,000
A120 Pvolve	2,361
A130 F45 Training Pointsettia	2,499
B100 Sherwin-Williams	3,264
B101 Ace Tutoring	1,360
B102 Poinsettia Village Dentistry	1,632
B103 HearUSA	1,560
B104 The UPS Store	1,560
B105 California Cuts	1,170
B106 Massage Impression	1,170
B107 Hydration Room	1,117
B108 Carlsad Pet and Feed	1,198
B109 Sandy Paws Animal Clinic	1,560
B110 Body20	1,360
B111 Ichitaru Ramen	1,360

Retailers	SF
B112 Sunny Fresh Cleaners	1,360
<b>B201 Available</b>	<b>1,526</b>
B202 State Farm Insurance	729
B203 Tara Tailor	720
B204 Blushing Bride	729
B205 Tristan Quiqley Photography	504
D100 Jersey Mike's	992
D101 Pelly's Fish Market	1,633
D103 Primo Pizza & Pasta	1,051
E100 Paw Purrfection	747
E101 Nail Design	700
E103 Starbucks	1,208
E104 Lagree Red	2,265
E200 Healios Laser Therapy	1,086
E201 Red Stone Equity Partners	863

Retailers	SF
E202 Flutter Lash & Skin Sudio	1,013
H100 Sushi Kuchi	2,117
H102 Sport Clips	1,196
H103 Regal Flooring Center	2,580
H105 Noth County Classical Ballet	1,239
H110 Sola Salon Studios	6,603
H120 US Bank	4,715
PAD1 Coldwell Banker	4,506
PAD2 Jack in The Box	2,335
PAD3 El Pollo Loco	2,250
PAD4 Pick Up Stix	2,000
PAD4B L'Atelier de Paris	1,000
PAD5 Chevron	4,005
PAD6 Chase Bank	5,000

**GLA TOTAL 161,062**

Where It Really Matters.

