

Corinth Quarter



8300 Mission Rd & W. 83rd St.,
Prairie Village, KS 66208



58,123 SF



Elise Bueker
p: 816-336-1455
e: ebueker@firstwash.com



Property Summary GLA: 58,123

Highlights

Corinth Quarter, located in the affluent Country Club District of Prairie Village, KS, offers residents a convenient, neighborhood-oriented shopping experience. The center is strategically positioned with an excellent tenant mix of restaurants, boutiques, and select service providers.



Trade Area

	1 Mile	3 Mile	5 Mile
Population	10,008	101,070	256,931
No. of Households	4,065	45,519	116,887
Avg. HH Income	\$181,426	\$132,958	\$116,080

Where It Really Matters.



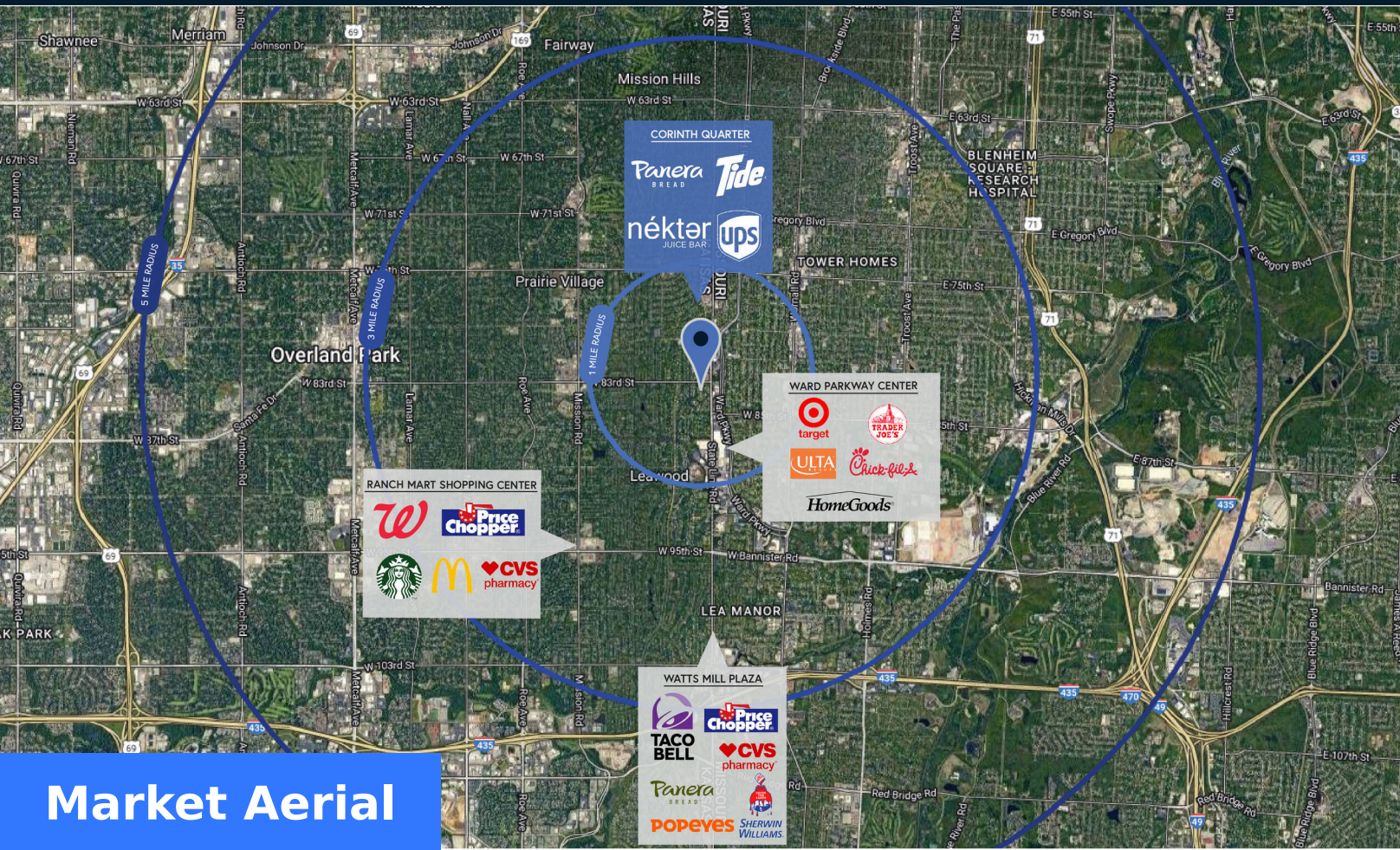
Corinth Quarter



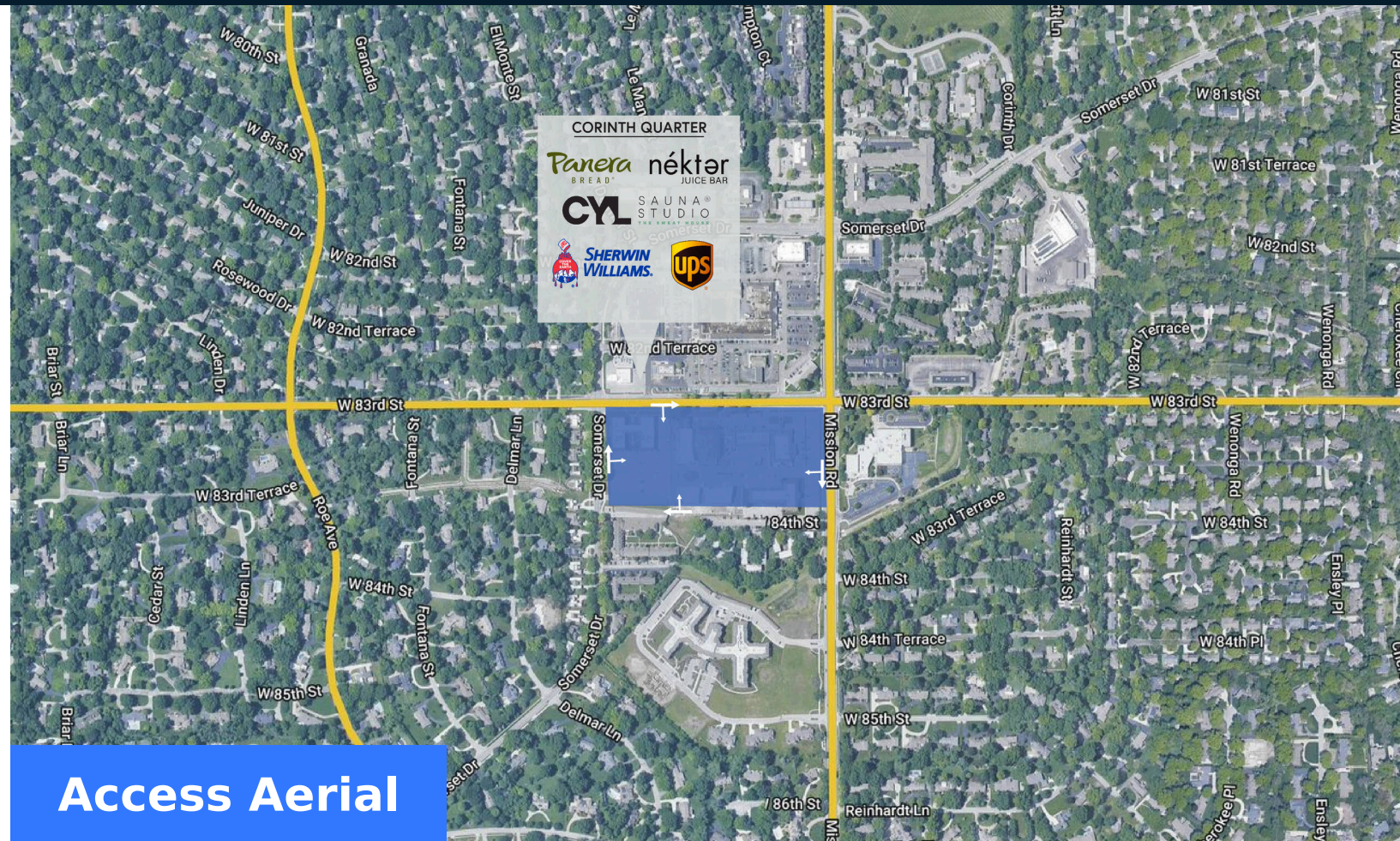
8300 Mission Rd & W. 83rd St., Prairie Village, KS 66208



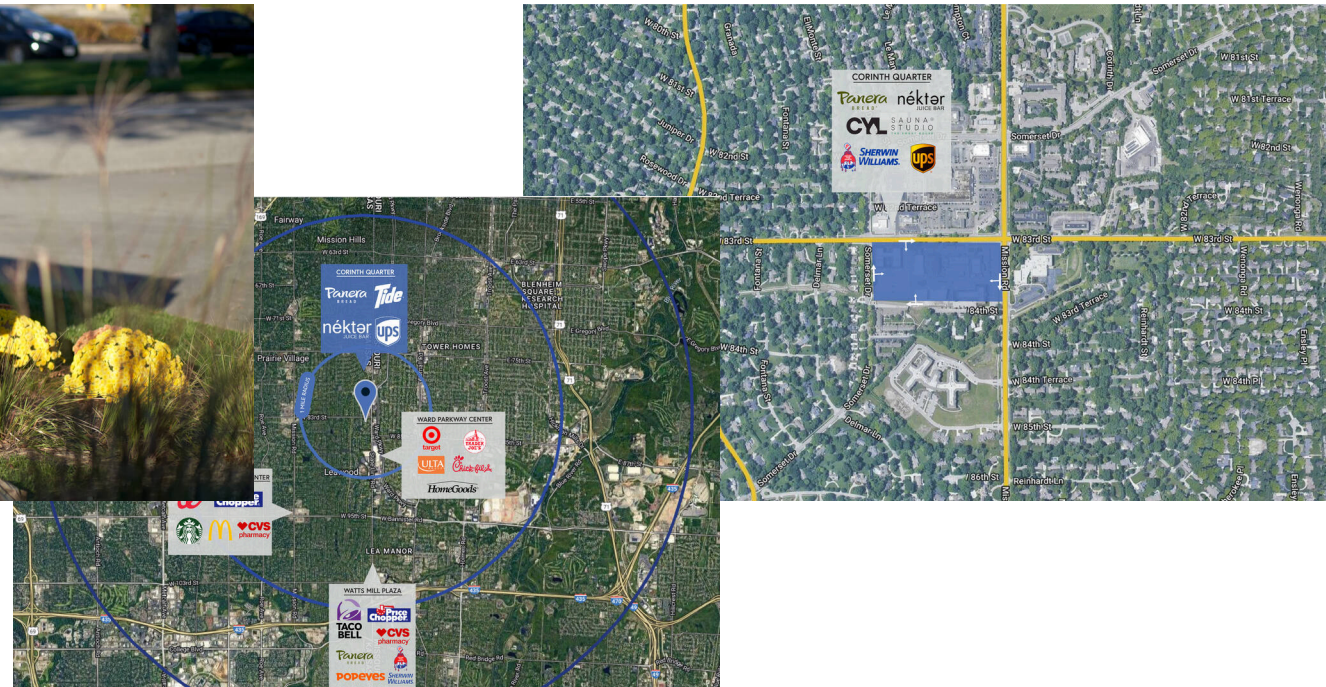
Elise Bueker
p: 816-336-1455
e: ebueker@firstwash.com



Market Aerial



Access Aerial



Where It Really Matters.



Corinth Quarter

Elise Bueker
 p: 816-336-1455
 e: ebueker@firstwash.com



■ AVAILABLE SPACE

Retailers	SF
01 First Watch	4,047
05 Tide Dry Cleaners	3,116
06 The UPS Store	1,246
07-10 Available	18,735
11 Panera Bread	5,241
12-14 Sherwin-Williams	4,450

Retailers	SF
15 Body20	1,909
16 Club Pilates	1,600
17 Nekter Juice Bar	1,250
18-20 Sopra Salon and Spa	4,195
21 CYL Infrared Studio	1,065
22 Circadian	1,155

Retailers	SF
23 Meddy's	2,841
24-25 Hunter Eye Vision	3,440
26 Scissors & Scotch	2,000
27 Kitch	1,800

GLA TOTAL 58,123

Where It Really Matters.

