

# Snell & Branham Plaza

179 Branham Lane,  
San Jose, CA 95136

92,352 SF



Jennifer Hess  
p: 9252791885  
e: jenniferhess@regencycenters.com



Property Summary GLA: 92,352

## Highlights

Snell & Branham Plaza is a destination grocery-anchored shopping center with a prime location in a dense residential area of San Jose, California. The property features busy small shop merchants and the highest-grossing Safeway store in the region.



Trade Area

	1 Mile	3 Mile	5 Mile
<b>Population</b>	32,606	219,135	504,341
<b>No. of Households</b>	10,731	70,393	159,325
<b>Avg. HH Income</b>	\$162,631	\$161,796	\$182,968

Where It Really Matters.



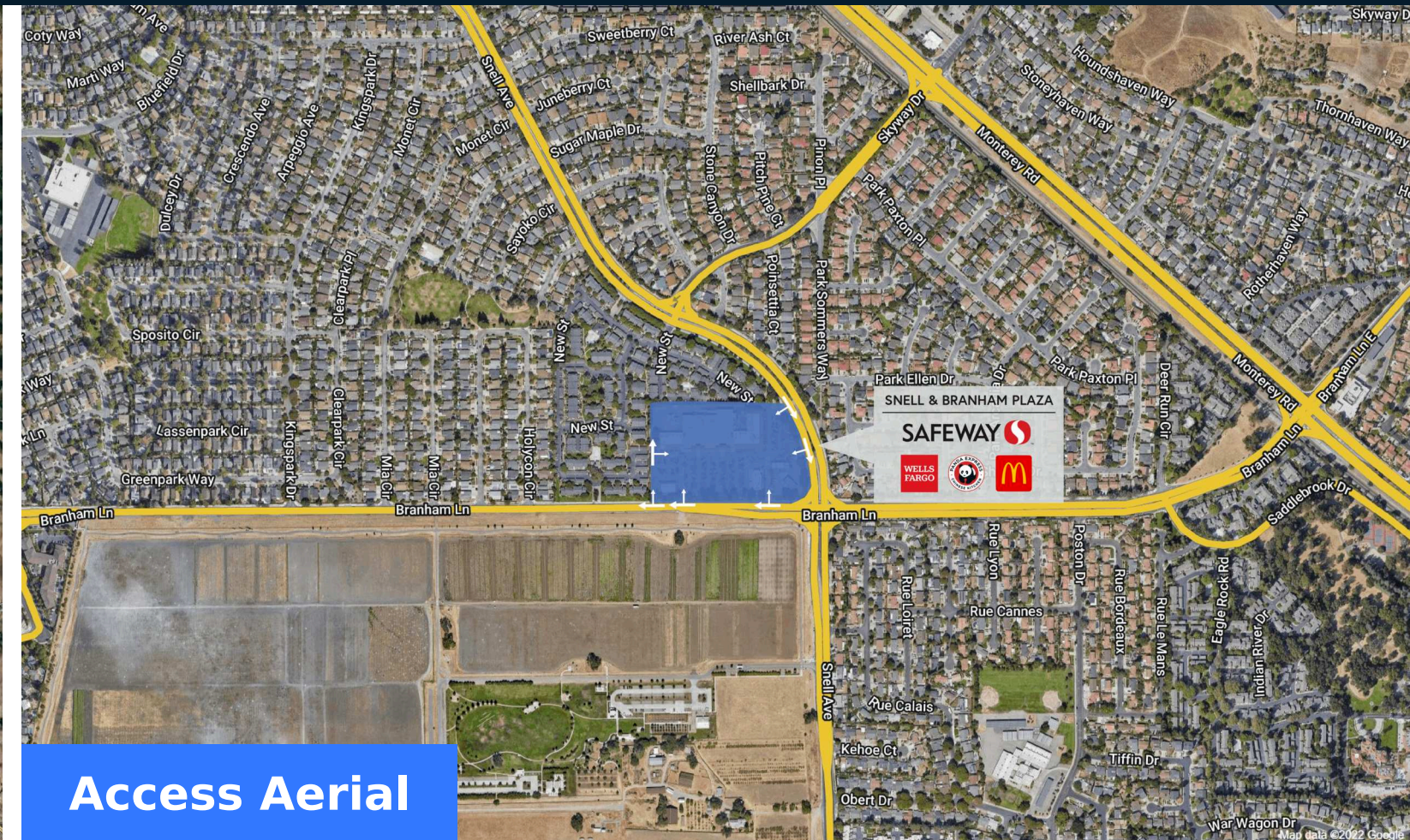
# Snell & Branham Plaza

179 Branham Lane, San Jose, CA 95136

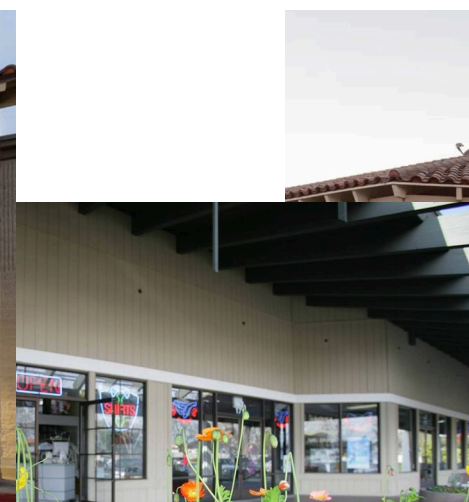
Jennifer Hess  
p: 9252791885  
e: jenniferhess@regencycenters.com



Market Aerial



Access Aerial



Where It Really Matters.



# Snell & Branham Plaza



Jennifer Hess  
 p: 9252791885  
 e: jenniferhess@regencycenters.com



■ AVAILABLE SPACE

Retailers	SF
PAD1 PLATINUM ENERGY	1
PAD2 McDonald's	5,000
PAD3 Wells Fargo Bank	5,000
01 Anytime Fitness	4,467
02 ANNIE'S NAIL SPA	1,183
03 AVAILABLE SOON	1,717
<b>04 Available</b>	<b>1,421</b>

Retailers	SF
05 POP-UP TEA, COFFEE & SN...	1,299
06 Safeway	52,550
07 CEFCU	4,062
09 Baskin Robbins	1,110
10 PostalAnnex+	1,334
11 BRANHAM DENTAL CARE	985
12 Panda Express	2,125

Retailers	SF
13 Great Clips	941
14 Subway	985
15 Wingstop	1,562
16 KAM PAI SUSHI	1,480
16B KING'S MARTIAL ARTS	1,815
18 HIGH FIVE PIZZA	3,313

**GLA TOTAL 92,352**

Where It Really Matters.

