

# The Corbin Collection



1445 New Britain Avenue,  
West Hartford, CT 06110



157,119 SF



Emily Gagliardi  
p: 301-907-7800  
e: egagliardi@firstwash.com



Property Summary GLA: 157,119

## Highlights

The Corbin Collection is a recent redevelopment featuring Saks Fifth Avenue's brand Off Fifth, REI, World Market, and Shake Shack. The property is located in the affluent trade area of West Hartford with easy access off I-84 and Route 9. The immediate trade area features household incomes greater than \$100,000 and dynamic retailers such as Apple, Forever 21, and Trader Joe's.



Trade Area

	1 Mile	3 Miles	5 Miles
<b>Population</b>	7,077	75,230	265,244
<b>No. of Households</b>	2,861	30,906	108,459
<b>Avg. HH Income</b>	\$137,422	\$127,164	\$101,193

Where It Really Matters.





# The Corbin Collection

1445 New Britain Avenue, West Hartford, CT 06110



Emily Gagliardi  
p: 301-907-7800  
e: egagliardi@firstwash.com



Market Aerial



Access Aerial



Where It Really Matters.

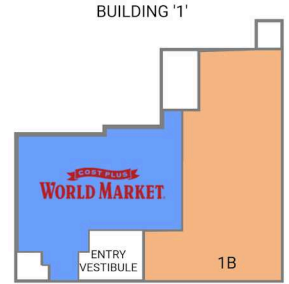




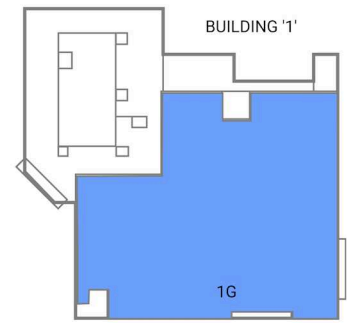
# The Corbin Collection



Emily Gagliardi  
 p: 301-907-7800  
 e: egagliardi@firstwash.com



LOWER LEVEL



UPPER LEVEL



■ AVAILABLE SPACE

Retailers	SF
PAD OLIVE GARDEN	7,687
1A CPWM (World Market)	15,427
<b>1B Available</b>	<b>19,053</b>
1C REI	24,950
1D Saks Off 5th	25,879

Retailers	SF
1E Club Pilates	1,866
1F Crumbl Cookies	1,885
1G Leased Space	43,840
2A-1 GO HEALTH	2,670
2A-2 Pokeworks	1,330

Retailers	SF
2B SHAKE SHACK	3,035
2C Hot Table Panini	2,500
2D Ivy Rehab Physical Therapy	2,516
2E Tavern in the Square	6,575

**GLA TOTAL 157,119**

Where It Really Matters.

