

# Haddon Commons

400 Cuthbert Road,  
Westmont, NJ 8108

53,889 SF



David Sherin  
p: 6107471212  
e: davidsherin@regencycenters.com



Property Summary GLA: 53,889

## Highlights

Haddon Commons is a neighborhood center in a thriving community just South of the affluent Cherry Hill submarket of suburban Philadelphia. The property sits in a dense and affluent residential neighborhood within the well-established Haddon Avenue retail corridor.



Trade Area

	1 Mile	3 Mile	5 Mile
<b>Population</b>	20,372	146,855	334,066
<b>No. of Households</b>	8,848	58,386	129,891
<b>Avg. HH Income</b>	\$143,302	\$116,895	\$108,980

Where It Really Matters.





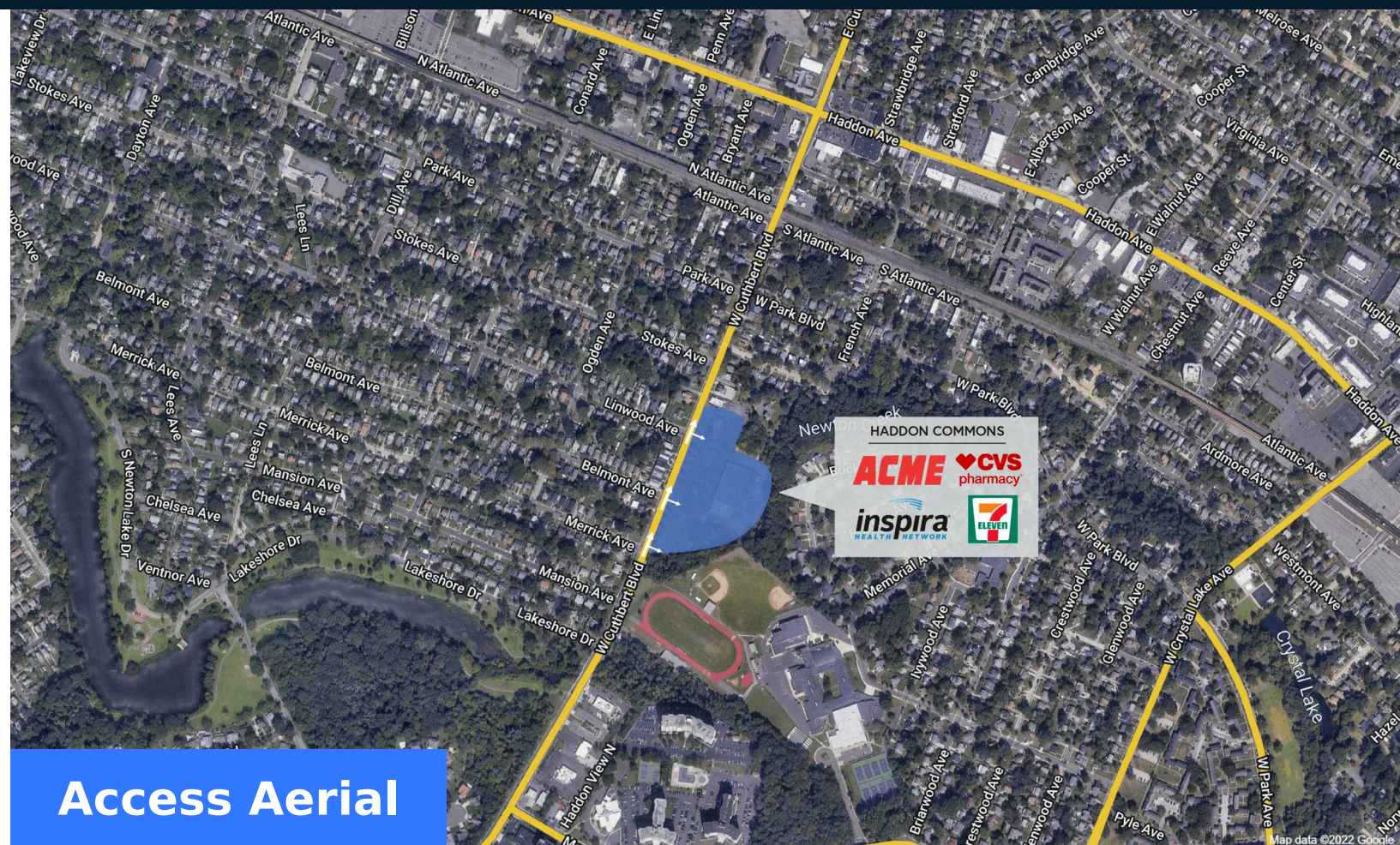
# Haddon Commons

400 Cuthbert Road, Westmont, NJ 8108

David Sherin  
 p: 6107471212  
 e: davidsherin@regencycenters.com



Market Aerial



Access Aerial



Where It Really Matters.

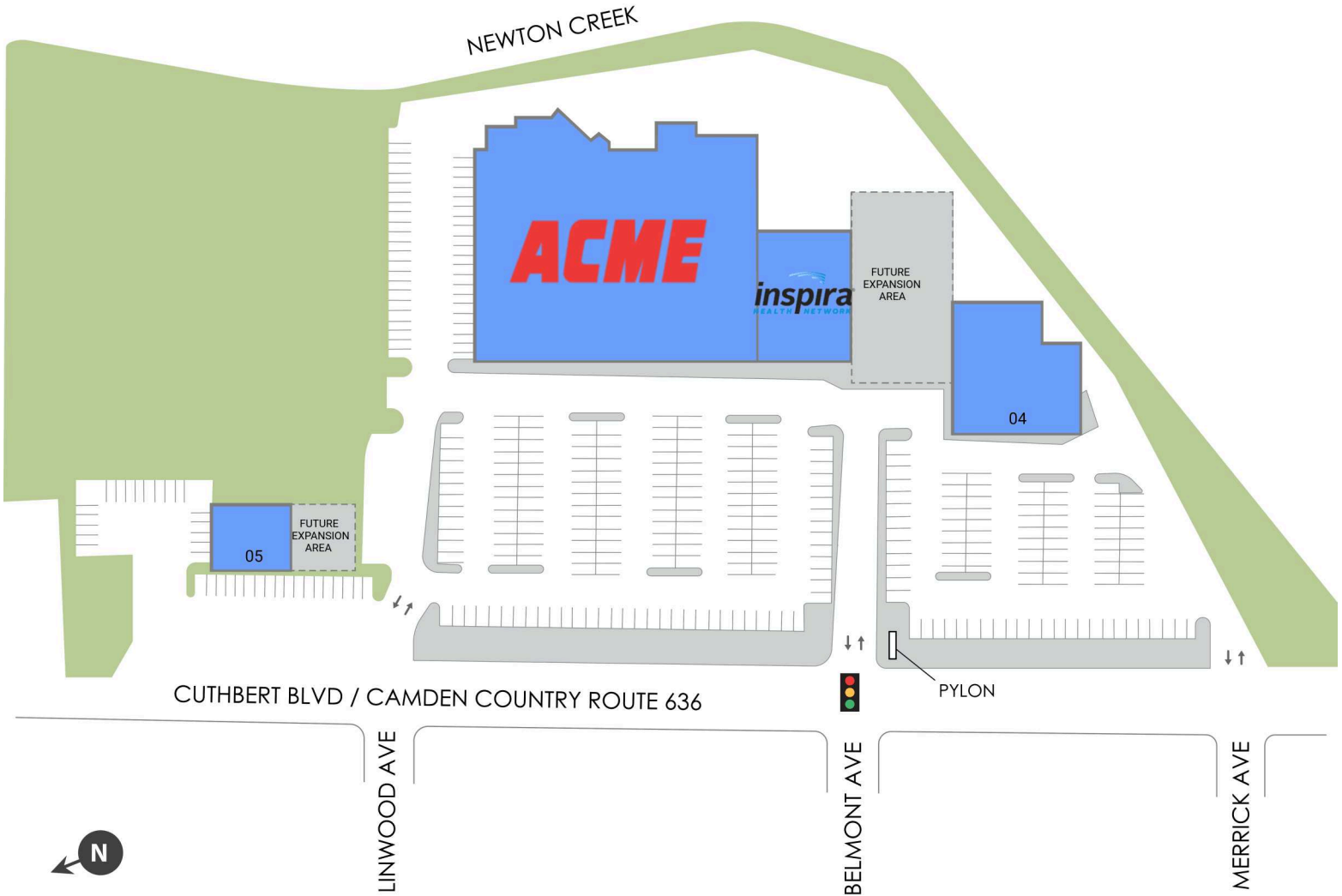




# Haddon Commons



David Sherin  
 p: 6107471212  
 e: davidsherin@regencycenters.com



■ AVAILABLE SPACE

Retailers	SF
01 ACME Markets	35,258
02 INSPIRA URGENT CARE	6,731

Retailers	SF
04 CVS	9,100
05 AVAILABLE SOON	2,800

**GLA TOTAL 53,889**

Where It Really Matters.

