

Sunset Plaza



1112-1238 Deer Park Avenue,
North Babylon, NY 11703



187,565 SF



Joanne Argenti
p: (516) 933-8880
e: jargenti@ripcony.com



Property Summary GLA: 187,565

Highlights

Sunset Plaza is the dominant neighborhood shopping center in the immediate trade area and anchored by Uncle Giuseppe's Marketplace, LA Fitness, PetSmart, and Rite Aid. Sunset Plaza is located at a key intersection directly off Deer Park Avenue, one of the major north-south thoroughfares on Long Island. The property serves as the primary community gathering place and recently underwent large-scale renovations.



Trade Area

	1 Mile	3 Mile	5 Mile
Population	16,931	141,567	292,000
No. of Households	5,637	46,050	91,787
Avg. HH Income	\$159,305	\$154,164	\$157,453

Where It Really Matters.



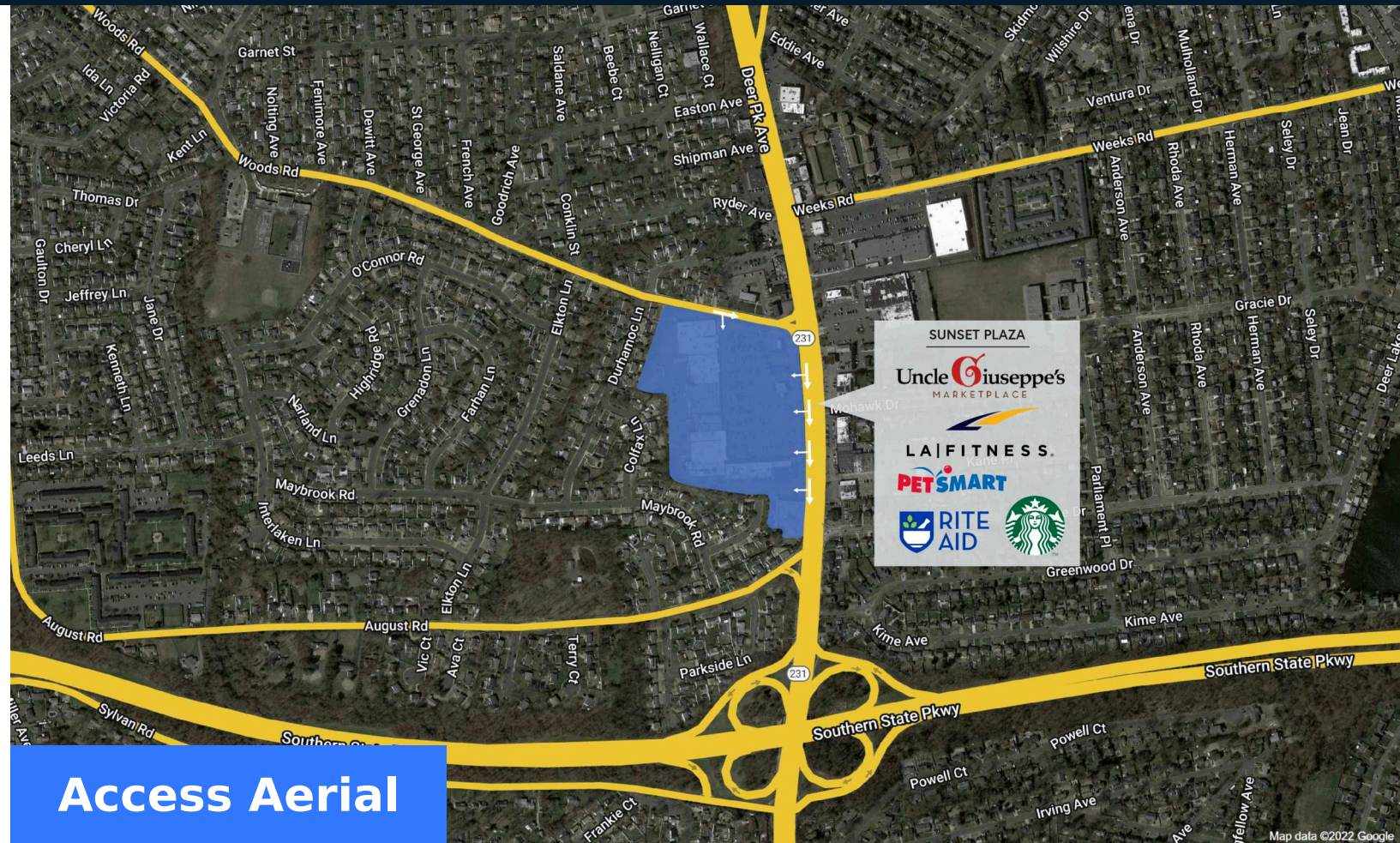
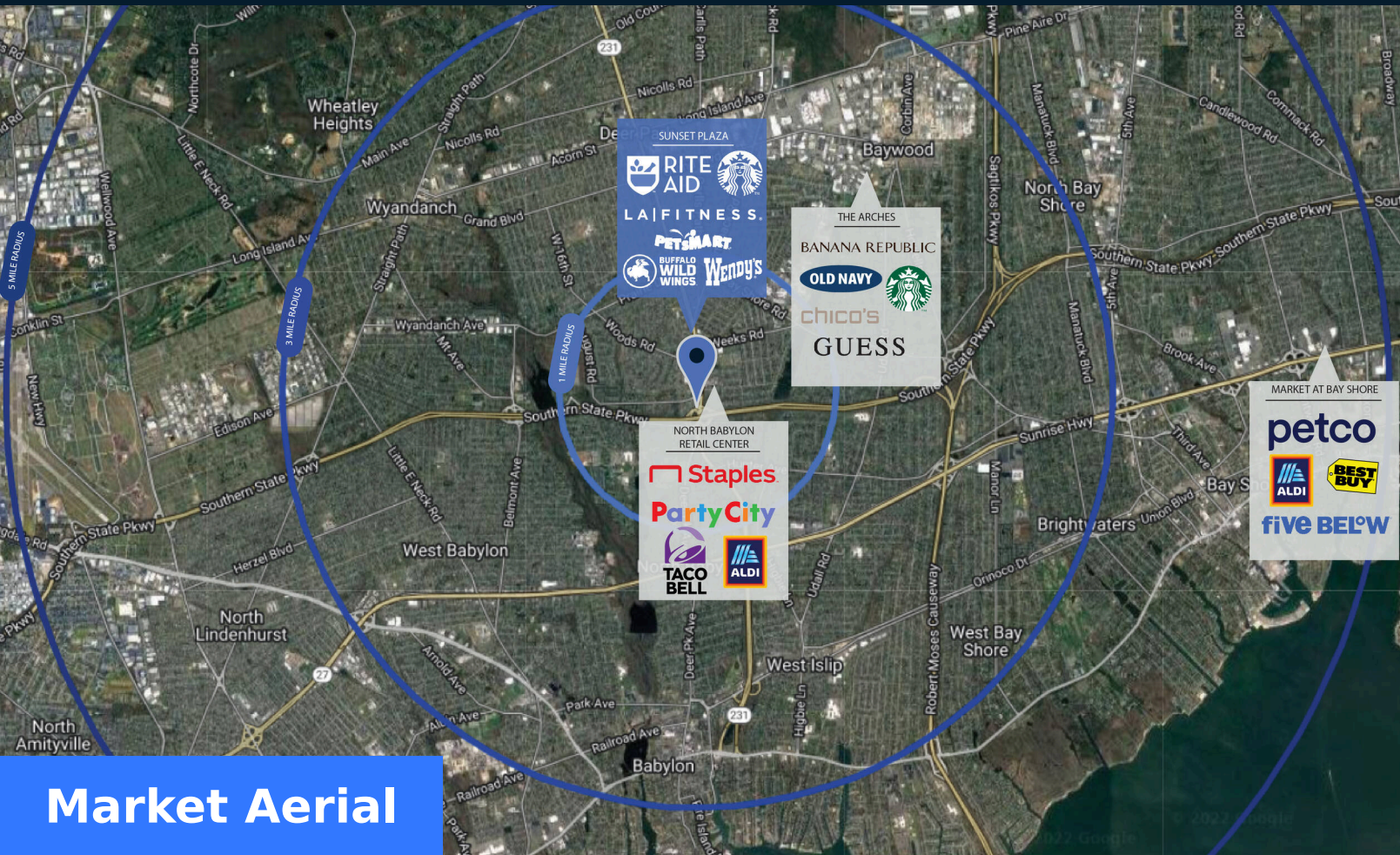
Sunset Plaza



1112-1238 Deer Park Avenue, North Babylon, NY 11703



Joanne Argenti
p: (516) 933-8880
e: Jargenti@ripcony.com



Where It Really Matters.



Sunset Plaza



Joanne Argenti
 p: (516) 933-8880
 e: jargenti@ripcony.com



■ AVAILABLE SPACE

Retailers	SF
01 L.A. Fitness	34,000
04 PetSmart	17,600
07 GameStop	3,375
08 Rite Aid	12,800
09 U.S. Postal Office	6,300
10 Leased Space	3,750
11 Boss Cuts Barber Shop	1,740
12 Fashion Nails and Spa	3,000
13 Available	2,640
14 Sunset Plaza Wines	4,100

Retailers	SF
15 Uncle Giuseppe's	39,241
16 Optimum	2,000
17 Pizzaiola Restaurant	3,600
18 Cupcakes by Lili	960
19-21 Voodoo Crab	4,330
22 Philly Pretzel Factory	1,200
23 Sunset City Eyewear	1,920
24 GNC	1,120
25 Guac Time	1,638
26 Available	2,260

Retailers	SF
27 Teachers Federal Credit Uni...	3,150
28 PM Pediatrics Management ...	7,200
29 China Buffet	10,000
30 Buffalo Wild Wings	8,820
31 Stand Up MRI	3,414
32 Citibank	2,807
33 Wendy's	2,880
34 Starbucks	1,600

GLA TOTAL 187,565

Where It Really Matters.

